

SINCE 1981  
SINCE 1981  
SINCE 1981  
SINCE 1981  
SINCE 1981  
SINCE 1981

We have been runing only for professional

Copyright © 2009 Hyundai Photonics All Rights Reserved.  
Hyundai Photonics B/D, 118-16, Chimsan-Dong, Buk-gu, Daegu, South Korea  
T.+82-53-359-1445 / F.+82-53-359-0333  
www.rimelite.com



**RiME LITE**®

SOFTBOXES • FLASHES • ACCESSORIES

www.rimelite.com

# INDEX



They're just made for each other  
The perfect light solution for professional  
Now with the RIME LITE

STROBE		POWER PACK		ACCESSORY	
XB PRIME	4	QUADPLEX	14	SPEEDRING ADAPTER	24
MIRA	6	QUADBOX	15	PROTECTING GLASS	25
UNION	7			REFLECTOR	26
STORM	8	<b>SOFTBOX</b>		CARRYING BAG	28
FAME	9			UMBRELLA	29
		FEATURE	18	LITE DISC	30
<b>CONTINUOUS LIGHT</b>		PERFORMANCE	19	LITE PANEL	31
HMI-L	10	SQUARE	20	BARNDOR	32
HL1K	11	RECTANGULAR	20	HONEYCOMB GRID	32
		OCTAGON	21	COLOR FILTER	32
<b>MOBILE PACK</b>		STRIP	21	GOBO	33
		GRAND	22	LITE CUT	33
POWER ACTION	12	LIGHTING BALLON	23	LIGHT STAND	35
DUO	16	MINI	34		

# ADVANTAGE

## RIME LITE, Advanced Technologies for Photograph equipment

Ever since it was founded in 1981, 'Hyundae Photonics Co., Ltd.', has continually through management philosophy represented a strong determination to contribute directly to the prosperity of people all over the world.

A professional System to meet every body needs that allows photographers the complete freedom to use studio lighting anywhere.

RIME LITE product line for digital flash system under new generation offers new levels of exposure, versatility while maintaining steady color temperature and longer product life.

### Different Premium Design

More powerful housing, more luxurious design looks more beautiful and is more durable with luxurious rear cover design and more durable aluminum case. Moreover, the bracket with strong bearing power enables you to freely photograph in all round directions without being influenced by additional equipments such as softboxes or other accessories.



Analysis of a strobe - A leap forward for Maintenance Free

### Circuitry

Sophisticated our circuitry ensures consistency in output and color temperature.

### Electrolytic capacitor

The aluminum electrolytic capacitors for flash are required to have both characteristics of microminiaturization and high reliability. Rubycon's aluminum electrolytic capacitors for flash are adapted to the tendency of lighting toward miniaturization and variation owing to ultrahigh capacity electrode foils, highly reliable electrolyte and production techniques of Rubycon's own and have got the world top market share.

### Flash tube

Special flash tube designed as the best in light equipment industry. The control of light power and the useful life is especially improved and precise exposure control and the original color is expressed more naturally.

# Be sure to check the initial 'H' mark of Hyundae Photonics.

### The supplied Cap-Screw has a UV-Coated protecting glass

UV-corrected protecting glass for the one that routinely comes with the unit, for improved daylight color balance is designed to protect flash tubes fixed on strobes and modeling lamps from breakage.



Robert Tober / www.toro.cc  
 Steve from „Vienna Streetrockaz“  
 2x Flashheads, Octagon Softbox, Beautydish

m. ISO 100, 1/125 sec, RSH165H

# XB PRIME

300 / 500 / 700 / 1200



- 7.0 f-stops
- LCD
- 1/10 f-step
- PROP
- SOUND
- CELL
- COUNT
- FAN
- PC CONTROL
- REMOTE CONTROL
- XBee
- DIGITAL ENCODER
- DIGIT

XB Prime is designed for expert photographers, and quick and precise power variation is possible through a radio control unit matched with the exciting design of the system.

In these days, Famous brands are using and advertising IR/RF (the second generation technique) style wireless system they have built into their strobes. But Hyundai Photonics has successfully developed the ZigBee Style's transmission which all engineers say that its technically greater than the Bluetooth high technology they have called this technique as the third generation. Simple 2.4GHz (RF style) will be included in the second generation technique



XB SYSTEM  
CONTROL BY PC & REMOTE CONTROLLER



SWING  
RADIO SLAVE

The powerful performance of the XB-PRIME remote controller



XB-PRIME is designed for professional photographers and can be controlled by Remote Controller. The ultra remote controller is one of the powerful performance functions when using XB-PRIME.

It can control a maximum of 50 strobes per remote controller. We applied revolutionary system like "ZigBee". We can assure that its performance is the best in the world.

Wireless system : ZigBee, Radio frequency; 2.4GHz

The precise power variation control for digital workflow by Computer



All XB-PRIME units located within 100M could be controlled by laptop and desktop computer. All status and functions of XB-PRIME can appear on the monitor. It gives quicker and easier operation and great satisfaction for professional photographer.

ACS (Aperture Control System), new technique of Hyundai Photonics

It can control the exact exposure value without using the exposure meter.

After you complete setting up an exposure value into XB-PRIME, whenever Photographer wants to increase or decrease the exposure value, it can control anytime. The LCD display window of "XB-PRIME" can show the exact exposure value among subject, camera and XB-PRIME, if those distance and position are not changing, can control it anytime.

Enabled precise adjustment of XB-PRIME's power variation



We applied two digital Encoder systems inside the XB-PRIME for easier operation. Both digital Encoders can adjust the flash intensity and the brightness of modeling lamp as precise increasing or decreasing by 0.1 f-stop

Fast powerful recycling time



You will experience recycling time from the XB PRIME that you have never experienced before. Our 1200J XB-PRIME's recycling time is only 1.3sec. (Full Power). This absolutely allows it to overcome the limitation of the MONOBLOCK which has 2.0 sec recycling time, and has the most powerful performance for continuous photographing. It can provide new highest standard suitable for new digital workflow.

Ultra precise Indication of the capacitor temperature controlled by Micro Processor on the XB-PRIME



It can prevent from reducing the capacitor's life span and protect the valuable electronic parts. In anytime and anywhere, you can check its status, and it provides the exact shooting time you could do on photographing. Inner XB-PRIME has very sensitive temperature sensor, it can stop the XB-PRIME operations automatically when capacitors are overheated.

Model	XB PRIME 3	XB PRIME 5	XB PRIME 7	XB PRIME 12
Flash Power	300w/s	500w/s	700w/s	1200w/s
Power Supply	100 ~ 120V (50 ~ 60Hz) 190 ~ 250V (50 ~ 60Hz)			
F-stop(Max.)	45.3	45.9	64.3	90.1
Power Range	2J ~ 300J	4J ~ 500J	5J ~ 700J	8J ~ 1200J
Variable Range of Flash	7.0 f-stops			
Variable Range of Halogen Lamp	7.0 f-stops			
Color Temperature	Full ~ 4 f-stop: 5700~5150, 5670~5170, 5600~5180, 5600~5200 Full ~ 7 f-stop: 5700~5000, 5670~5010, 5600~5010, 5600~5050			
Flash Duration(0.5t)	1/2700	1/2200	1/1500	1/1300
Recycling Time, Min.~Max.(250v)	0.05sec. ~ 0.8sec	0.05sec. ~ 0.8sec	0.05sec. ~ 0.9sec	0.05sec. ~ 1.2sec
Voltage Stabilization	Max. +/- 0.3% stability for digital image			
Power Control	Digital Encoder System			
Replaceable Flash Tube	plug-in type. Code:			
Halogen Lamp	Halogen 150w, 300w, 650w, 1kw based GX 6.35, Pin			
Flash & Halogen Lamp Control	TWO Digital Encoder System			
Halogen Lamp Variability	Full, Proportional, User Defined, off			
Audible Recharge Confirmation	YES			
SYNC Voltage, Protect System for Camera	DC 12Volt, YES.			
Cooling Fan	Powerful AC Fan without noise Can check the operating temperature in real-time.			
Protecting System	YES			
Against Overheat	Accurated Micro processor Control itself automatically.			
Fuse	Flash : YES / Halogen Lamp : YES			
Protecting Glass for Head	YES			
Dimension(LxWxH, mm) AC120V	420x120x115	420x120x115	453x120x115	470x120x115
Dimension(LxWxH, mm) AC220V	390x120x115	390x120x115	420x120x115	453x120x115
Weight(kg)	2.9	3	3.3	4



Available to control total 50 strobes, 5 Groups and 10 channels

XB PRIME can be controlled total 50 strobes by Remote Controller, Computer through Zigbee system. This makes it possible for the photographers to serve the comfortable circumstance of photograph.

# MIRA

400 / 600 / 800 / 1000 / 1200



## ULTRA PRECISE MECHANISM

RIME LITE's other superior product "MIRA" has solved the inconvenient way of using the MONO type's strobe. Because it has been designed with a definite preference towards the user interface and considering what performance the user has required so far.

Model	MIRA 4	MIRA 6	MIRA 8	MIRA 10	MIRA 12
Flash Power	400w/s	600w/s	800w/s	1000w/s	1200w/s
Power Supply	100 - 120V (50 - 60Hz)	190 - 250V (50 - 60Hz)	100 - 120V (50 - 60Hz)	190 - 250V (50 - 60Hz)	100 - 120V (50 - 60Hz)
F-stop(Max)	32.6	45	45.6	64	64.3
Power Range	6J - 400J	9J - 600J	12J - 800J	15J - 1000J	18J - 1200J
Variable Range of flash	6.0 f-stops				
Color Temperature(+/-250)	5550				
Flash Duration(0.5t)	1/2500	1/2000	1/1650	1/1550	1/1570
Recycling Time, Min.-Max.(230v)	0.1sec-1.3sec	0.1sec-1.5sec	0.1sec-1.4sec	0.1sec-1.5sec	0.1sec-1.7sec
Recycling Time, Min.-Max.(110v)	0.1sec-1.6sec	0.1sec-1.8sec	0.1sec-1.7sec	0.1sec-1.8sec	0.1sec-2.0sec
Voltage Stabilization	Max +/-0.5% stability for digital image				
Power Control	Button System				
Modeling Lamp	Halogen 300w, 650w, 1kw based GX 6.35, Pin				
Variable Range of Halogen Lamp	6.0 f-stops				
Modeling Power Control	Button System				
Modeling Lamp Variability	Full Proportional User Defined off				
Audible Recharge Confirmation	YES				
SYNC Voltage	DC 12Volt				
Cooling Fan	Powerful AC Fan without noise				
Protecting System against overheat	Micro processor Control YES				
Fuse	Flash: YES / Modeling Lamp: YES				
Protecting Glass for Head	YES				
Dimension(LxWxH, mm)	390x120x115	390x120x115	420x120x115	453x120x115	453x120x115
Weight(kg)	2.9	3	3.5	3.8	4

# UNION

300 / 400 / 600



## Easy to learn, easy to use, Rotary style ENCODER system

We have done our best to apply clients significant opinion what they want and need at Union under developing it. Our motivation for developing UNION is to match our clients eye. Most of users require a STROBE of which have a simple adjustment, a precise power output, and economical price. We have tried the next generation UNION for many photographers to satisfy heartily with UNION's great performance.

Robert Tober / www.toro.cc  
Dotz Girl Dani  
4x Flashheads, Octagon Softbox, Beautydish  
Standard Reflector

Model	UNION 2	UNION 4	UNION 6
Flash Power	200w/s	400w/s	600w/s
Power Supply	100 - 120V (50 - 60Hz)	190 - 250V (50 - 60Hz)	100 - 120V (50 - 60Hz)
F-Stop(Max)	22.8	32.8	45.3
Variable Range of Flash & Halogen Lamp	4.5 f-stops		
Color Temperature(+/-200)	5550		
Flash Duration(0.5t)	1/2250	1/2050	1/1800
Recycling Time, Min.-Max.(230v)	0.1sec-1.6sec	0.2sec-1.6sec	0.5sec-1.8sec
Recycling Time, Min.-Max.(110v)	0.1sec-1.9sec	0.3sec-2.0sec	0.6sec-2.1sec
Voltage Stabilization	Max +/-0.5% stability for digital image		
Power Control	Digital Encoder System		
Modeling Lamp	Halogen 300w based GX 6.35, Pin		
Modeling Power Control	Digital Encoder System		
Modeling Lamp Variability	Full Proportional User Defined off		
Audible Recharge Confirmation	YES		
SYNC Voltage	DC 12Volt		
Cooling Fan	Powerful DC Fan without noise		
Protecting System against overheat	Micro processor Control YES		
Fuse	YES		
Protecting Glass for Head	YES		
Dimension(LxWxH, mm)	390x120x115	390x120x115	390x120x115
Weight(kg)	2.9	3	3.3

### | High precise control of Flash Intensity, Allowing 1KW Modeling Light of MIRA

Continuous halogen light function up to 1000Watt (1000W at 220V, 650W at 110V) and changeable halogen light makes previews 'too EASY'. An infallibly Microprocessor modulates the intensity of the halogen brightness up to 6.0 f-stops. Allowing for high repetitive precision in digital imaging with a steady color temperature and power variation in 1/10 f-stop increments. And longer flash tube life without discoloration, make these excellent for modeling and portraits, the best choice for modeling and portraits.

### | Rapid re-cycling times for new digital workflow

These days, 'how fast does the strobe recycle?' This question would be common among pro-photographers. 'MIRA' series could provide perfect re-cycling times to continuous photographing for user

### | Perfectly harmonized new generation flash trigger 'SWING' at 'MIRA'

'MIRA' with 2.4 GHz frequency's 'SWING' flash trigger can provide the great synchronization nowadays for new digital cameras.

### | Exact exposure control makes for a comfortable user circumstance for photographer

'MIRA' series can maintain the exact exposure when photographing and keep the fixed natural color. Its performance on increasing or decreasing of light can be executed by 0.1 f-stop, total 6 f-stops precisely.



### | The best functions of Economical strobes, Digital Encoder, LCD Display, and SMD

Union can be controlled the flash power intensity and brightness modeling lamp by DIGITAL ENCODER. Moreover, we completed the ultra accurate main processor with digital encoder system on the latest architected SMD circuit board inner UNION. It applied the good visibility's LCD indicator so that you could check all operation status of UNION easily. These accurate production systems could be able to support UNION quicker, more precise, and cut-down the production cost. Union is the best choice for photographers who are going to enter into the professional world and use the strobe quicker, more economical, and has the great performance.

### | New UNION can be combined with RF system, 'Swing'

By equipping the wireless system, UNION is the item which focuses on comfortable operation. Swing (RF system) can be controlled through one way of 2.4 GHz, high technology. It has 16 channels and its maximum available operating range is 110m (Outdoor).

### | 4.5 f-stops digital control for more precise adjustment

Flash power intensity: 4.5 f-stops, Modeling lamp: 4.5 f-stops (300w, G-6.35 base). It can control the modeling lamp that has a Prop function with flash power, continuous, and individual action.



# STORM

200 / 400 / 600



## RIME LITE's another new item 'STORM'

RIME LITE's other new item 'STORM', the most suitable strobe and value for the amateur and new user. Day by day, the digital workflow has changed so fast. Storm's design makes it easy to familiarize the user who hasn't known how to use strobes and improve their quality with strobes. Giving the first consideration of user what to need and want, was storm's birth background.



m, ISO 100, 1/125 sec, RSH165H

Model	STORM 2	STORM 4
Flash Power	200w/s	400w/s
Power Supply	100 ~ 120V (50 ~ 60Hz) 190 ~ 250V (50 ~ 60Hz)	
F-stop(Max)	22.8	32.8
Variable Range of flash	4.5 f-stops	
Color Temperature(+/-200)	5550	
Flash Duration(0.5t)	1/4000	1/1700
Recycling Time, Min.-Max.(230v)	0.1sec-1.7sec	0.1sec-2.2sec
Recycling Time, Min.-Max.(110v)	0.1sec-1.9sec	0.1sec-2.4sec
Voltage Stabilization	Max +/-0.5% stability for digital image	
Power Control	Digital Encoder System	
Modeling Lamp	Krypton Max. 250w, E27, Screw	
Variable Range of Halogen Lamp	5.0 f-stops	
Modeling Lamp Variability	Full Proportional User Defined off	
Audible Recharge Confirmation	YES	
SYNC Voltage	DC 12Volt	
Cooling Fan	DC Cooling Fan	
Protecting System against overheat	Micro processor Control YES	
Fuse	YES	
Protecting Glass for Head	YES	
Dimension(LxWxH, mm)	326x120x115	326x120x115
Weight(kg)	2.2	2.3

### | Simple control, 4.5 f-stops

It can increase or decrease by precise 0.1 f-stop as HI-END level's strobe. But its price would be amazing for user. The STORM is made by superior electric parts in the world. (Capacitor : Rubycon company, only made in Japan), (Flash Tube : Perkin Elmer Company ; Only made in Singapore)

### | Easy adjustment, easy control of all functions

Using a strobe can be a little bit difficult for the amateur and entry level user, if they want to learn how to get good quality with strobes.

Storm can make the user getting into the swing of using strobes easy, and can support them on the way to becoming a great professional user in the near future. Even the professional user can use it as background lighting or spot.

### | Portable strobe for Amateur photographers

Storm, the new line, can be operated on ease for amateur photographers. This is very a useful item as applying new interface and reflecting customers needs in the market.



# FAME

200 / 400 / 600



## Compact Construction

FAME series is ideal for the amateur with simple functions and easy operation. This economical model of flash series has stable color temperature and flash intensity.



Model	FAME 2	FAME 4	FAME 6
Flash Power	200w/s	400w/s	600w/s
Power Supply	100 ~ 120V (50 ~ 60Hz) 190 ~ 250V (50 ~ 60Hz)		
Fstop(Max)	22.5	32.4	45
Variable Range of flash & Halogen Lamp	4.5 f-stops		
Color Temperature(+/-200)	5550		
Flash Duration(0.5t)	1/4000	1/2300	1/1700
Recycling Time, Min.-Max.(230v)	0.1sec-1.7sec	0.1sec-1.9sec	0.1sec-2.2sec
Recycling Time, Min.-Max.(110v)	0.1sec-1.9sec	0.1sec-2.1sec	0.1sec-2.4sec
Voltage Stabilization	Max +/-0.5% stability for digital image		
Power Control	Volume System		
Modeling Lamp	Krypton Max. 250w, E27, Screw		
Modeling Power Control	FAME-e, FAME : NO / FAME PLUS : YES		
Modeling Lamp Variability	Full Proportional User Defined off		
Audible Recharge Confirmation	YES		
SYNC Voltage	DC 12Volt		
Cooling Fan	DC Cooling Fan		
Protecting System against overheat	Micro processor Control YES		
Fuse	YES		
Protecting Glass for Head	YES		
Dimension(LxWxH, mm)	385x120x115	385x120x115	385x120x115
Weight(kg)	2.3	2.5	2.7

### | FAME

The most economical model in RIME LITE's Line up. This Flash series has steady color temperature. Quick charge and discharge makes an excellent lighting tool for photographing moving objects and is suitable for different studio requirements.

### | Control of 4.5 f-stops, Supporting Modeling light

FAME series can be controlled with a variable 4.5 f-stops flash range of flash variable range and is supported with a proportional modeling light. By this control system, photographers take a picture with the best photo circumstance.

### | Various Model series

Photographers are able to choose from various Models of the FAME series. For the photographers who often need the high mobility, FAME-e series, can satisfy them. For the photographers who would like to operate the modeling light with more control, FAME PLUS can be useful to them.



# HMI-L

150



## Light for digital camcorder or DSLR

HMI-L is a high performance item which is operated by easy functions without noise. Moreover, HMI-L can be used with both a Camera and a Camcorder which have limited white balance control.

MODEL	HMI-L
Max. Output power(w/s)	150w/s
Color Temperature(+/-300)	4200
Dimension(LxWxH, mm)	326 x 120 x 115
Weight(kg)	2.3



**| Daylight, like sun shine**  
HMI (Halogen Metal Iodide) has the same color temperature as the sun in day time. HMI-L OF RIME LITE which selected HMI (Halogen Metal Iodide) provides white light source and it is a solution for UCC studio and outdoor photographing.

**| CDM-T lamp**  
CDM-T lamp of the HMI-L has equipped, can produce the white light suitable for digital CAM or DSLR. Its power is only 150w, but its exposure value is just 0.5 f-stop different to the 1kw Halogen lamp.  
  
CDM-T lamp's life is much longer than HQI lamp as it can use for 32,000hours without changing the lamp.

**| No More, Flicker-Free**  
The core technology of continuous light source is the ballast stabilizer that removes flickering. HMI-L has been developed on the basis of know-how of strobe design for the past 30 years and exerts excellent performance.

**| Designed innovational digital electronic ballast**  
Optimized design protects the system against overheating and the over voltage support enables steady and safe ongoing use.  
  
This can remove the filter noise at the part of the power supply, and can prevent breaking the lamp when the lamp turns on in short time.

# HL1K

1000



## Powerful Halogen Light of 1KW

HL1K is a continuous light with 1kw powerful lamp. The photographers can experience the strong and soft light by HL1K.

Model	HL1K
Max. Output power(w/s)	1000w/s
Color Temperature(+/-300)	3400
Modeling Light(220-250V)	Halogen Max. 1000w/s GX 6.35, Pin
Modeling Light(100-110V)	Halogen Max. 650w/s GX 6.35, Pin
Dimension(LxWxH, mm)	281x120x115
Weight(kg)	1.8



**| Extensive usage**  
1000 w/s high power, HL1K is a powerful solution for both photos and video files such as video recording, advertisements, portraits by digital cameras.

**| Strong light circumstance for users**  
It is very durable for continual photographing, and unlike continuous lighting system.  
  
It doesn't need any charge, thus providing overwhelming performance.

**| 3400K, providing the stable color temperature**  
Halogen lamp of 3400k light power with 3400k color temperature is fixed. Variable control gives power from 5 ~ 1000w.

**| Stable Light, FLICKER-Free**  
HL1K has been developed by our technician that is applied with technical Know-How, "No Flicker".  
  
This technical skill is applied to our upgraded strobes to supply the photographer with the best technology of our lights.

# POWER ACTION 6

600



Model	POWER ACTION 6
Flash Power	600w/s
F-stop(Max)	45
Variable Range of Flash & Halogen Lamp	4.5 f-stops
Color Temperature(+/-200)	5500
Flash Duration(0.5t)	1/1700
Recycling Time, Min.-Max.(Battery full)	0.1sec - 4sec
Voltage Stabilization	Max. +/-0.5% stability for digital Image
Power Control	Digital Encoder
Modeling Lamp	Halogen Max. 12v 100w, GX 6.35, Pin
Circuit Protection	Fuse 250V T10AL
Protecting Glass for Head	YES
Charging Time	4.5 Hours
Cooling Fan	DC Cooling Fan
Dimension(LxWxH, mm)	385x120x115
Weight(kg)	9



| Power action can connect with a maximum of two heads  
 Accurately designed battery pack system for photographing on location can support more precise adjustment of flash power and the perfect performance. At full battery charge between 200~600 shots can be taken depending on the power output.

| For photographing on location

Durable housing for traveling, compact size body style, designed convenient bag for easier portable transport. It can allow the user to move it in anyplace and safely.

| the digital encoder system

Equipped the digital encoder system in POWER ACTION 6 can support the power action that would be superior to other comparable battery pack systems

By 0.1 f-stop increasing or decreasing is one of the great performances on using POWER ACTION 6. Also, equipped indicator LCD can appear all status of its operation in real-time.

| Rapid full charge time of battery

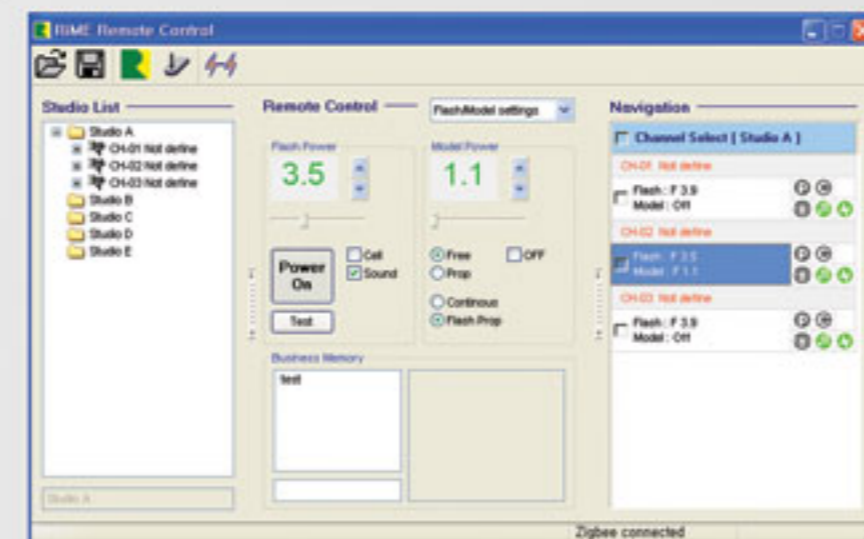
RIMELITE's engineers were able to reduce the time of which the battery pack can be charged to full charge. Suitable for new digital workflow and the busy photographer. The motivation of all RIME LITE engineers are how to make the user experience satisfying and convenient when using strobes.



# QUADPLEX

## New Generation Power Pack system

QUADPLEX can combine 4 XB-PRIME. It shows great performance in anyplace and even commercial photographing outdoors or in the studio. Unbelievable wide power intensity (just, refer each QUADPLEX option), ultra precise adjustment of the output, great combination with exclusive QUADPLEX's Softbox and adapter.



| To add XB-PRIME's perfect wireless system

Another attractive point of QUADPLEX can be controlled by remote controller and PC program. If they would be added on using QUADPLEX, they will show great performance for professional photographer.

All operational status of QUADPLEX will be monitored on the Remote Controller's LCD and PC screen.



# QUADBOX

## Easy move, easy adjustment, easy combination

All designed accessories of this were applied because of the precious client's opinion of what they wanted and needed. User will be surprised when they see this great operation combining and moving are so great.



Robert Tober / www.toro.cc  
Mike Blochberger (BMX Champion) create a 6m high „Tell-Wip“  
2x Flashheads, Octagon Softbox, Standard Reflector

| It can be configured as a Monoblock or as a Power Pack system

When user wants to use the QUADPLEX as Monoblock at the studio, please, separate each XB-PRIME on the housing, and use it as a Boom Head strobe.

When user want to have higher exposure value and higher quality as Powerful power pack, please, combine 4 XB-PRIME units on the QUADPLEX housing.





# DUO

600



## AC / DC Conversion power system 'STROBE'

DUO can provide the various photo circumstances at outdoor or studio. It can use both power supply AC and DC. Furthermore, It has been reflected the Photographer's desire which they want to have a high quality in anyplace.

Model	DUO 6
Flash Power	600w/s
F-stop(Max.)	45
Variable Range of flash	4.5 f-stops
Power Control	Volume System
Color Temperature(+/-200)	5500
Recycling Time, Min.-Max.(230v)	0.1sec. ~3.2sec.
Recycling Time, Min.-Max.(110v)	0.1sec.~3.5sec.
Recycling Time, Min.-Max.(Battery pack)	0.1sec.~4sec.
Voltage Stabilization	Max. +/-0.5% stability for digital Image
Flash Duration(0.5s)	1/1700
Modeling Light	Krypton Max. 250w, E27, Screw
Circuit Protection	Fuse 250V T10AL
battery pack Charging Time	4.5 Hours
Cooling Fan	DC Cooling Fan
Fuse	YES
Protecting Glass for Head	YES
Dimension(LxWxH, mm)	385x120x115
Weight(kg)	9.7



| The best advantage of DUO, Conversion power system.

They are designed for Photographing at studio and at outdoor for photographers who need to have a special light for the both of subject place.

DUO is comprised of the Battery Pack and the Monoblock. In the studio the DUO can individually use with AC power. DUO has ultra electric design which is Embedded system, can make Duo it can be able to use both of the power supply AC and DC.

| with the portable DC battery pack

Duo is a new type of flash aimed at all levels of photographers including social event or wedding photographing. Thus, it will provide excellent performance for the outdoor photographing and ample the intensity of radiation during shooting indoors. bt the outdoor environments, it is available to shot of 200~600 times with Battery Pack. Designed to complement the DUO- AC compatibility, the B&P (Battery & Pack) can enable you wherever wants to have photographing with the portable DC battery pack.

| Great performance, Steady function.

DUO is the economical model in our flash lines. Also, it has a steady color temperature. Quick and easy performance makes this can be able to get high quality on photographing.

| 40 steps, 4.0 f-stops of Flash Intensity

DUO power is controlled by Volume System. The power Intensity of DUO monoblock has the range of 40 steps, 4.0 f-stops.

# SWING

2.4 GHz



## Reliable and compatible with all RIME LITE goods

Swing's main transmission module is the latest 2.4 GHz, is very steady and its speed is also so great to compare with another transmission module. All RIME LITE has an extra slot on their rear cover. Joining Swing-1's receiver to strobes slot is so easy. New concept SWING-1 can provide talented function.



Transmitter



Receiver

| Sixteen Selectable channels

Swing provides sixteen individual radio frequency channels on the 2.4 GHz frequency band to avoid radio interference.

| Fast Sync speed

Up to 1/250 sec. for focal plane shutter (depending on camera & strobe)

| Extended working range

Maximum working range is 120m line of sight. An above average range is 50m outdoor.

Effective Distance : 50m studio  
110m outdoor

Batter Type : AAA type 1.5 Voltage

Channel : 16 channels

Sync Speed : Up to 1 / 1000

Shutter Sync Speed : Up to 1 / 250

# SOFTBOX

Advanced technology, Easy set-up

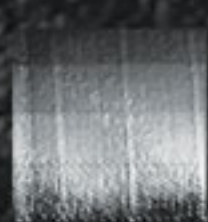
## THREE TYPES OF SOFTBOX

### STANDARD SOFTBOX



Strong and durable with a softer inner metallic coating, combined with our array of diffusers are perfect for creating extremely soft light.

### RIME GRID FABRIC



This fabric is unique pattern in combination with special double coating supplies uncompromised uniformity in the reflected light without spill from the flash source.

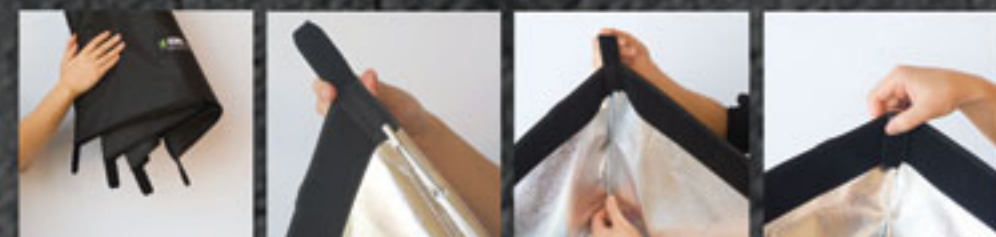
### VIDEO FABRIC



Video fabric is suitable for continuous photographing and filmmaking of which are demanded on using high thermal lamp such as 2kw to 5kw of the Halogen Lamp for a long time, use is so wide like the general studio photographing and the filmmaking on location. This has two types of fabric. One of those has a unique special coating on the fabric against high thermal, the other has a special metal(AL) combinable with fabric.

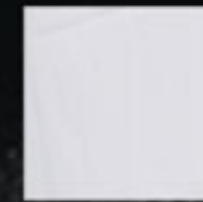
### Easy to install, Easy to use

Our softbox can be installed at ease and doesn't need much repair expense by few parts.



## THREE TYPES OF DIFFUSER

### STANDARD DIFFUSER



The Standard diffuser is the general item used by many photographers. The advantage of this diffuser is none yellowing, water proof, and none fluorescence dye by special coating.

### DOUBLE RIP DIFFUSER



The Double rip diffuser is unique item developed by our technician which provided the more upgraded item for the photographers. Double Rip diffuser's uniform fiber density construction concentrates light photons to deliver a balance and exact light for unparalleled versatility in the creation of lighting effects.

### VIDEO DIFFUSER



The video diffuser is applied to the special fabric which is coated by high technique. So, this can endure the high temperature for a long time photographing such as the Video and Halogen light.

### Putting quick softbox rods, get out Corners



Inserting Rods into edge of four softbox. If rods insert into Corners, Fold up each corner so that rods extend freely.

# ADVANTAGE



## Double Rip (optional) Diffuser and Standard Diffuser

### UV Coating

The light source of flash units produce UV-R and UV-A, 390nm ~ 400nm, this light can effect the color quality of photos, but the specially applied UV coating to our diffusers reduce UV-R and UV-A light by up to 98%, so the desired color of shot can achieved with absolute confidence

### None Fluorescence Dye

Special processing and the use of none fluorescence dyes in our diffusers reduce blue toning in photo imaging.

### Waterproof

The waterproofing process ensures that the RIME Grid Fabric and diffusers are free from change, color change and the refraction of light as this fabric does not retain moisture, so enabling a longer life and quality of photo shot.

### Flame Resistant

The RIME Grid Fabric and diffusers are flame retardant treated to reduce any risk of inadvertent burning

### Discoloration

Due to heat from light flashes and or exposure to sunlight our discoloration prevention process ensures longevity without discoloration. (yellowing)

### New type diffuser for video

This item is so special, it can endure higher temperature in a long period of time on using high thermal Lamp. Also, this is nothing to changes the origin color tone of fabric for a long time to use it.

### Double Rip diffuser

Double Rip diffuser's uniform fiber density construction concentrates light photos to deliver a balanced and exacting light for unparalleled versatility in the creation of lighting effects.

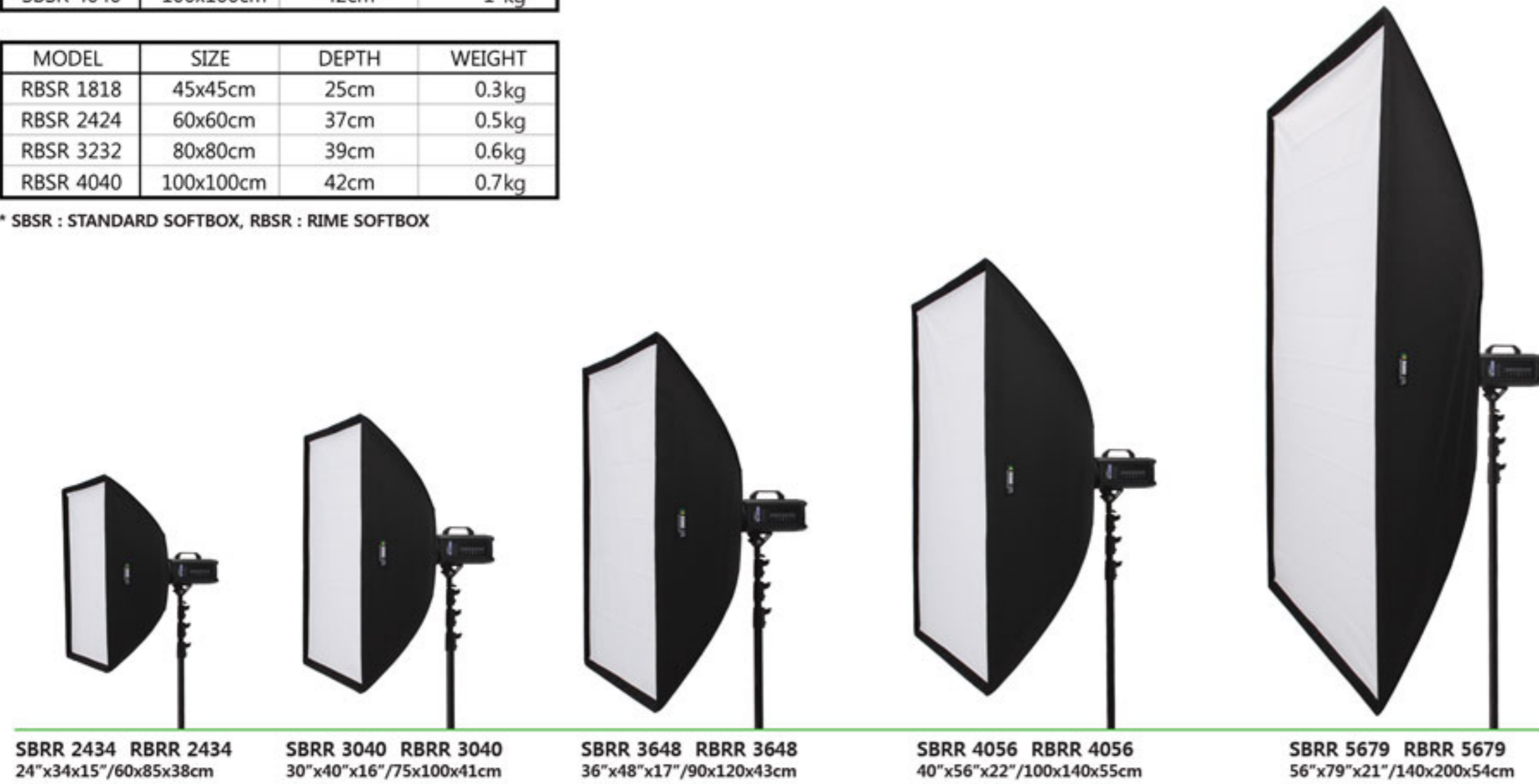
## SQUARE SOFTBOX

Designed for strobe light shaping the Square Softbox series is a multipurpose softbox that delivers on even natural light and ultimate versatility.

MODEL	SIZE	DEPTH	WEIGHT
SBSR 1818	45x45cm	25cm	0.4kg
SBSR 2424	60x60cm	37cm	0.6kg
SBSR 3232	80x80cm	39cm	0.8kg
SBSR 4040	100x100cm	42cm	1 kg

MODEL	SIZE	DEPTH	WEIGHT
RBSR 1818	45x45cm	25cm	0.3kg
RBSR 2424	60x60cm	37cm	0.5kg
RBSR 3232	80x80cm	39cm	0.6kg
RBSR 4040	100x100cm	42cm	0.7kg

\* SBSR : STANDARD SOFTBOX, RBSR : RIME SOFTBOX



## OCTAGON SOFTBOX

Strobe light designed, the inherent circular shape of the octagon creates an elegant wrap around effect perfect for fashion and portraits, the narrow profile of the Octagon Softbox allows for greater scope of use and doesn't consume valuable space in the studio.

MODEL	SIZE	DEPTH	WEIGHT
SBTR 1224	30x60cm	24cm	0.4kg
SBTR 1236	30x90cm	34cm	0.5kg
SBTR 1271	30x180cm	38cm	1 kg
SBTR 1648	40x120cm	38cm	0.9kg
SBTR 2448	60x120cm	48cm	1 kg
SBTR 2875	70x190cm	44cm	1.3kg

MODEL	SIZE	DEPTH	WEIGHT
RBTR 1224	30x60cm	24cm	0.3kg
RBTR 1236	30x90cm	34cm	0.4kg
RBTR 1271	30x180cm	38cm	0.7kg
RBTR 1648	40x120cm	38cm	0.7kg
RBTR 2448	60x120cm	48cm	0.7kg
RBTR 2875	70x190cm	44cm	0.8kg

\* SBTR : STANDARD SOFTBOX, RBTR : RIME SOFTBOX



## RECTANGULAR SOFTBOX

Strobe lighting designed, the Rectangular Softbox series is a most effective heat resistant softbox for obtaining soft natural light, great for fashion shot.

MODEL	SIZE	DEPTH	WEIGHT
SBRR 2434	60x85cm	38cm	0.8kg
SBRR 3040	75x100cm	41cm	1 kg
SBRR 3648	90x120cm	43cm	1.2kg
SBRR 4056	100x140cm	55cm	1.3kg
SBRR 5679	140x200cm	54cm	2.2kg

MODEL	SIZE	DEPTH	WEIGHT
RBRR 2434	60x85cm	38cm	0.6kg
RBRR 3040	75x100cm	41cm	0.7kg
RBRR 3648	90x120cm	43cm	0.7kg
RBRR 4056	100x140cm	55cm	0.8kg
RBRR 5679	140x200cm	54cm	0.9kg

\* SBRR : STANDARD SOFTBOX, RBRR : RIME SOFTBOX



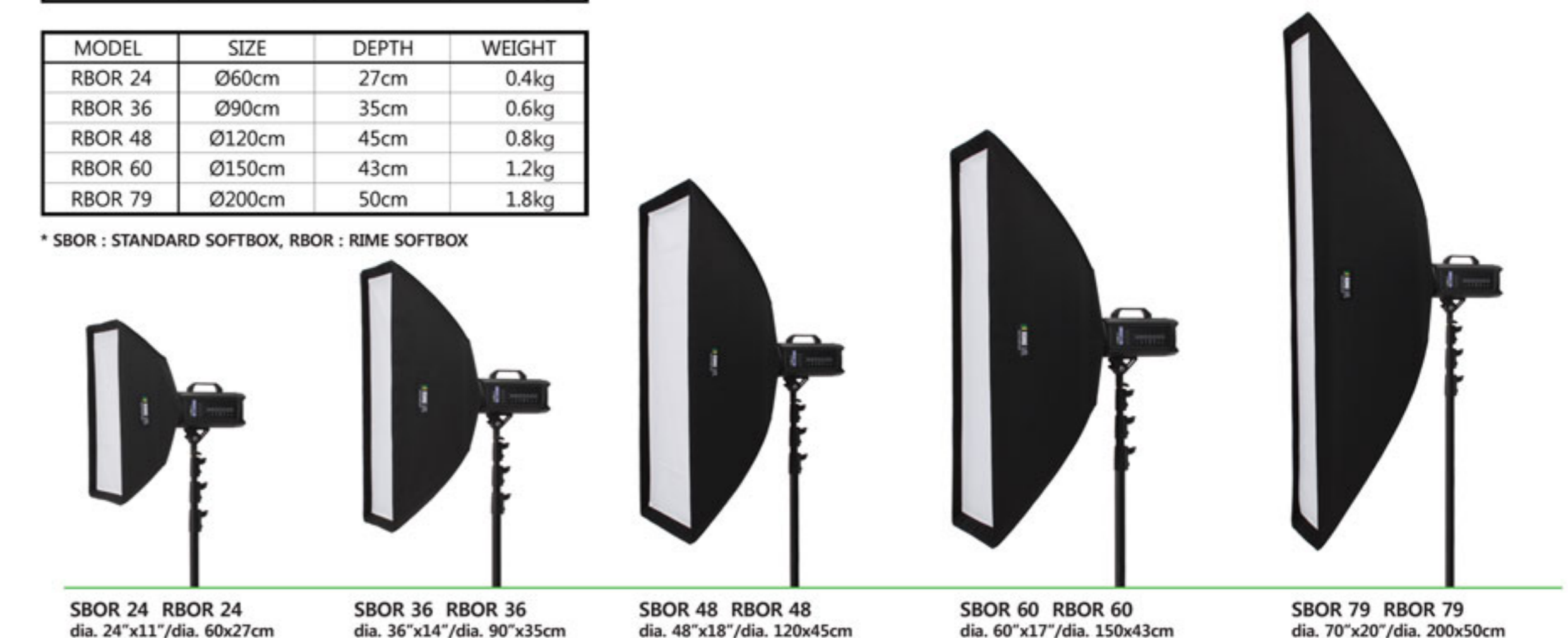
## STRIP SOFTBOX

The advantage shape of the Strip Softbox, long and narrow, gives optimum use as a strip-light for multiply subjects. It produces no overspill onto the background and due to its profile makes it easy to shoot over when used as a foreground light. Combined with our easy to use diffuser systems allows the photographer to achieve, buttery soft shots through to sharp contrast shots with great ease.

MODEL	SIZE	DEPTH	WEIGHT
SBOR 24	Ø60cm	27cm	0.5kg
SBOR 36	Ø90cm	35cm	0.8kg
SBOR 48	Ø120cm	45cm	1.3kg
SBOR 60	Ø150cm	43cm	1.9kg
SBOR 79	Ø200cm	50cm	2.4kg

MODEL	SIZE	DEPTH	WEIGHT
RBOR 24	Ø60cm	27cm	0.4kg
RBOR 36	Ø90cm	35cm	0.6kg
RBOR 48	Ø120cm	45cm	0.8kg
RBOR 60	Ø150cm	43cm	1.2kg
RBOR 79	Ø200cm	50cm	1.8kg

\* SBOR : STANDARD SOFTBOX, RBOR : RIME SOFTBOX



## GRAND SOFTBOX

Grand softbox is proud of big size from 90cm to 230cm and its extensive purposes. Jumping beyond the limit of the expression photography offers, it opens a new digital image world you have never experienced. Total Control in creating the desired lighting effect in large areas is the 'go' through this parabolic softbox. Made from our Grid Fabric\*, the Finely calibrated inner surface coating, in combination with our range of diffusers and products, enables the photographer to create light from buttery soft to sharp contrast. The added benefit of lightweight construction makes it so easy to relocate in the studio and to transport on location.



MODEL	SIZE	DEPTH	WEIGHT
GSB 35	Ø90cm	40cm	1 kg
GSB 47	Ø120cm	50cm	1.4kg
GSB 79	Ø200cm	90cm	2.1kg
GSB 91	Ø230cm	100cm	2.3kg

## LIGHTING BALLOON



**Optimized the Balloon's fabric Balloon against high temperature.**

Finally, RIME LITE has ventured into the filmmaking industry. This item is RIME LITE's the first step towards the new frontier.

The Balloon light is a great performer in a wide area. It can be used outdoors with bright resource of light, or for photographing inside the studio.

## THE BALLOON LIGHT

Featuring steady color temperature and a consistent brightness of light.

It is changeable from 1kw to 5kw. The Balloons fabric is optimized against high operating temperatures. The light through the Balloon's fabric is so soft that it is suitable for filmmaking and photography alike.

This item demands a high level of technology for manufacturing. A special coating is applied to prevent the item from burning the soft fabric. RIME LITE has developed a new rod, preventing bending due to high temperatures.

Diameter : 70cm.  
 Color temperature : 3200k.  
 Halogen lamp : 1Kw (OSRAM 64747 CP/71),  
 2Kw (OSRAM 64777), 5Kw. Base: G22.  
 Lifespan: Up to 200 hour.  
 Construction voltage : 230V.  
 Fabric of Balloon : AL metal + special coating fabric.  
 Diffuser of Balloon : Video type fabric.





**SPEEDRING ADAPTER**

Very Suitable Choices for softboxes  
360 revolving Speedring Adapter

**Broaden the choice of strobe!**

Very hard and solid aluminum case is used for Speedring Adapter to elicit the best performance with the lightest weight. It is designed to mount various RIMELITE box on the heads of 25 strobes from 20 companies



SBC-BALCAR    SBCP-BRONCOLOR(Pulso)    SBMB-COMET(B)  
SBCI-BRONCOLOR(Impact)    SCMA-COMET(A)    SCT-COURTNEY



SDL-DYNLITE    SEC-ELINCHROM    SHSE-HENSEL(Expert)  
SET-ELECTRA    SHR-HD/RIMELITE    SHSM-HENSEL(Mono)



SIF-INTERFIT    SMBP-MULTIBLITZ(Profilux)    SNVA-NOVATRON  
SJL-JTL    SMBV-MULTIBLITZ(Vari)    SNVB-NOVATRON 2



APF-Profoto(Adapter Assembly)    SPPA-PROPET(A)  
SPF-Profoto    SPPB-PROPET(B)    SPG-PHOTOGENIC



APN-PHOTONA    SST-SPEEDOTRON    STK-TOKINA    SRO-Seedring only  
S16-For Grand Softbox    SSS-SUNSTAR    SIO-Inside ring only    SNM-NORMAN

**Design for users**

RIMELITE Speedring Adapter has a 360 degree rotation and can freely adjust the light power of soft box

**Strobe Mount**

**HYUNDAE PHOTONICS / RiME LITE,**  
Bowens, Balcar, Broncolor, Comet, Courtney, Dynalite, Electra, Elinchrom, Hensel, Interfit, JTL, Multiblitz, Novatron, Profoto, Prophet, Photogenic, Photona, Speedtron, Sunstar, Tokina, Norman



**PROTECTING GLASS**

Especially for users to prevent those kind of accidents  
flash series have include protecting glass in places

**The best Protecting Glass**

RIME LITE Protecting Glass for which beauty is not everything is designed to protect flash tubes fixed on strobes and modeling lamps from breakage. Direct color temperature can be controlled by opaque protecting glass including brown protecting glass which creates warm light power.

Transparent protecting glass(no change in color temperature), Frost(Opaque) protecting glass(decrease in color temperature, -100k, soft lighting), Front -Frost(Semi-transparent) protecting glass(decrease in color temperature, -50k, soft lighting), Light Brown protecting glass(decrease in color temperature, -200k, soft lighting), Brown protecting glass(decrease in color temperature, -300k, soft lighting)

**Translucent**



Color Temperature : No change

**Frost**



Color Temperature Decrease -100k

**Front-Frost**



Color Temperature Decrease -50k

**Brown**



Color Temperature Decrease -200k

**Dark Brown**



Color Temperature Decrease -300k

## STANDARD REFLECTOR



Shadow : Depth Shadow  
 Character : More soft Gradation & Dynamic Range,  
 Focus on Center  
 Effect : To express subject in detail  
 Option : Honeycomb Grid 10° / 20° / 30° / 40°  
 Umbrella, Barn Door, Color Filter



## STANDARD REFLECTOR(Hard)



Shadow : Depth Shadow  
 Character : Soft Gradation & Dynamic Range,  
 Focus on Center  
 Effect : Increasing 1.5~2 steps of exposure  
 Available to More Detail Expression  
 Option : Honeycomb Grid 10° / 20° / 30° / 40°  
 Umbrella, Barn Door, Color Filter



## MEDIUM REFLECTOR



Shadow : Soft Shadow  
 Character : Soft Gradation & Dynamic Range,  
 Wide Spread of Center  
 Effect : Wide and Uniform Light.  
 Detail Expression of Subject  
 Option : Honeycomb Grid 10° / 20° / 30° / 40°  
 Umbrella, Barn Door, Color Filter



## BEAM REFLECTOR



Diameter : 330mm  
 Shadow : Very soft shadow  
 Character : More Soft Gradation & Dynamic Range,  
 Wide spread on Center  
 Effect : Uniform Exposure of giving Very Wide Light  
 Option : Honeycomb Grid 10° / 20° / 30° / 40°  
 Umbrella, Barn Door, Color Filter



## SNOOT REFLECTOR



Shadow : Strong shadow  
 Character : Strong Contrast in Center  
 Effect : Detail Expression of Subject  
 Option : Hood Honeycomb Grid 10° / 20° / 30°



## BACK REFLECTOR



Diameter : 330mm  
 Shadow : Using as Background  
 Character : Soft Gradation & Dynamic Range  
 Effect : Available to detail expression



## NARROW REFLECTOR



Diameter : 285mm  
 Shadow : Depth Shadow  
 Character : Very clear gradation  
 Effect : Very detail expression of Subject



## WIDE REFLECTOR



Diameter : 430mm  
 Shadow : Very Soft Shadow  
 Character : More Soft Gradation & Dynamic Range,  
 Wide spread on Center  
 Effect : Equal Exposure of giving Very Wide Light





**CARRYING BAG**

Very Convenient Carrying bag for Photographer

**Carrying bag protects the expensive equipments more safe**

RiME LITE carrying bag is made of light stuff and convenient with enough storage space. Strobes and stands can be stored conveniently in the carrying bag. You can put in order clean with the carrying bag indoors, too. Accessories can also be putted besides strobes.



**Partitions**

RiME LITE carrying bag is made especially solid for expert photographers who always travel, tired of carrying heavy loads, and inner partitions are convertible. Also, enough shoulder string has cushions to protect shoulders, and the grasp has anti-slippery textile

**More luxurious design**

Well-matching your name, as an expert photographer RiME LITE carrying bag designed in black looks great in any place. It is proud of durability, as strong as luxurious appearance, and portability due to lightweight. It is simple and stylish both in formal and casual attire. You can store stand through double zipper system easily and fast.



**UMBRELLA**

Black & Silver, Black & White, White (Translucent)

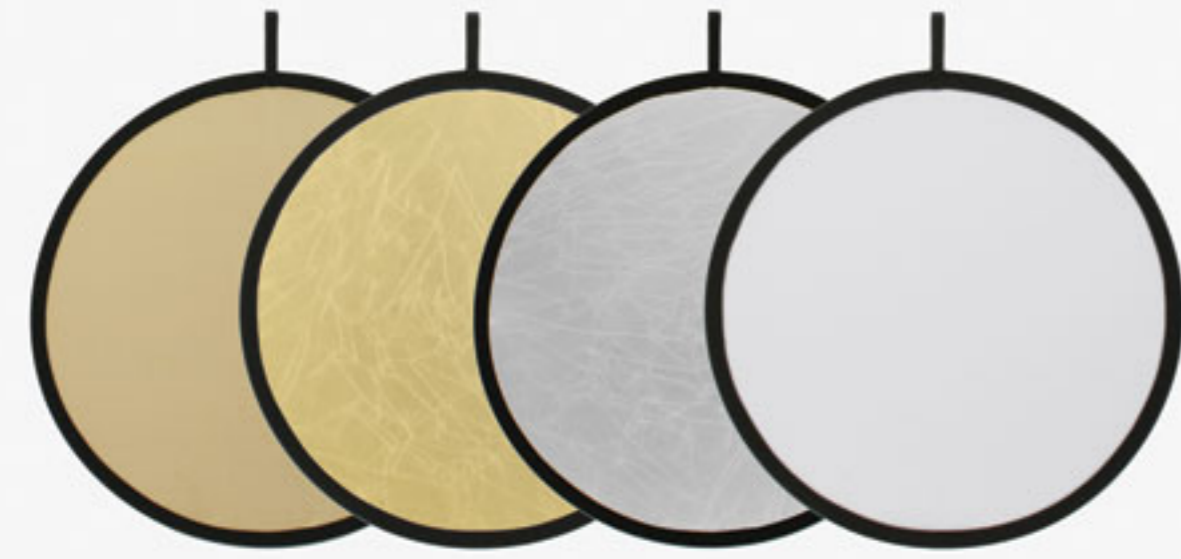
**Softer light power**

RiME LITE umbrella that provides softer light power can be directly set into strobes after folded. We have Black & white Umbrella for soft light power, Black & silver Umbrella for contrast adjustment, White(Translucent) Umbrella for even diffusion, and light diffuses in proportion to the size of the umbrella.



**Umbrella (Double Layer)**

Umbrella	Black & Silver	Black & White	White (Translucent)
110cm	○	○	○



**LITE DISC**

Using to Various Colors in accordance with Photographer's Concept



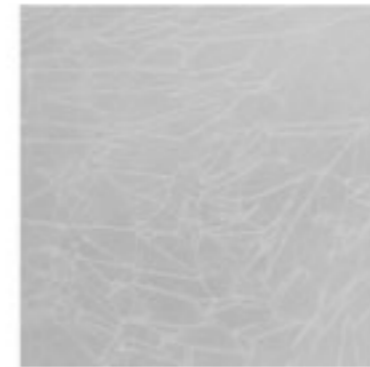
**Various colors according to themes**

Lite disc is used for auxiliary lighting to shadow area or dim area where contrast is too intense. Located opposite to main lighting, it adjusts the contrast of images. Also, a lot more softer light power is available in portraits of outdoor counterlight. It can be portable, and can be folded up for users convenience.

We have various kinds of RIME LITE such as gold, silver and white Lite Disc. Come and enjoy Lite Disc.

**Silver & White (Double Layer)**

Color	Silver & White		
Size	80cm	100cm	120cm



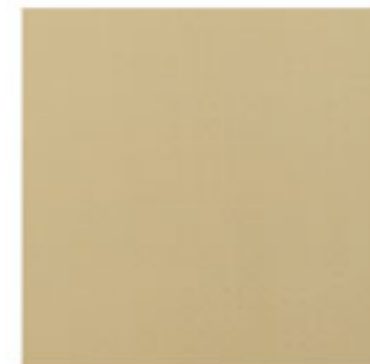
**Gold & White (Double Layer)**

Color	Gold & White		
Size	80cm	100cm	120cm



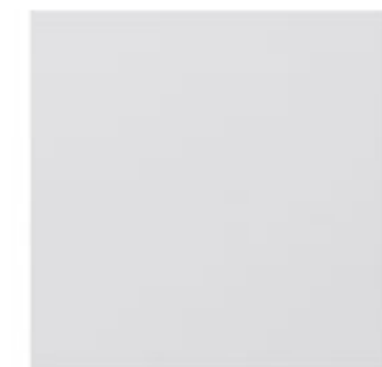
**Soft Gold & White (Dobule Layer)**

Color	Soft Gold & White		
Size	80cm	100cm	120cm



**White (Translucent)**

Color	White (Translucent)		
Size	80cm	100cm	120cm



**LITE PANEL**

Whenever you want various angles, Use RIME LITE Lite Panel



**Easy setting, free reflection angle adjustment**

Located opposite to main lighting, full-length lite panel adjusts the contrast of images. It owes free reflection angle adjustment to the ball head. It is supported by 4 sticks, and every one can put together and take parts easily.

Lite Panel	Metal Silver & White	Soft Gold & White	Silver & Gold
80x120cm	O	O	O
100x180cm	O	O	O
100x220cn	O	O	O



Soft Gold

Metal Silver

Silver

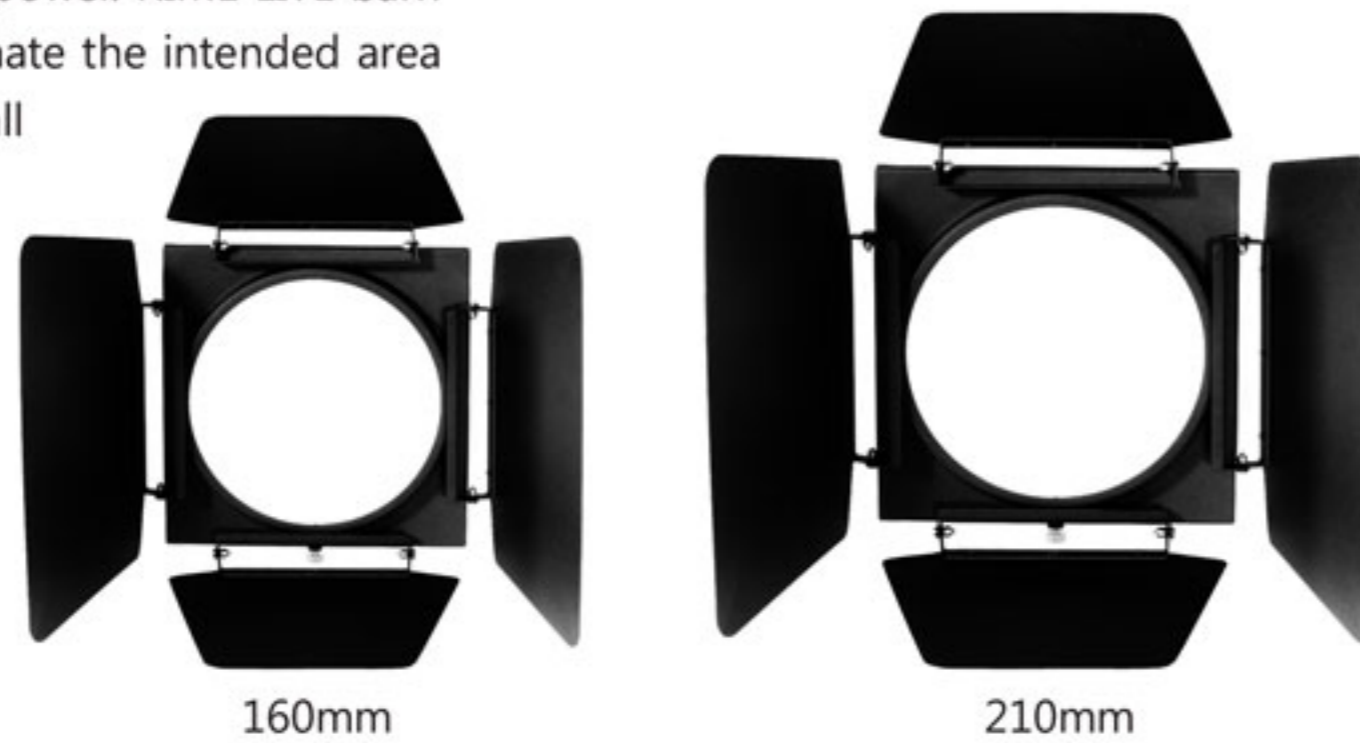
Gold





**BARN DOOR**

Barn door adjusts effectively the direction of light power. RIME LITE barn door, a type fixed onto the strobe head can illuminate the intended area by adjusting panels of 4 directions. We have a small type for standard reflectors and a large type for medium reflectors, so artificial color adjustment is available.



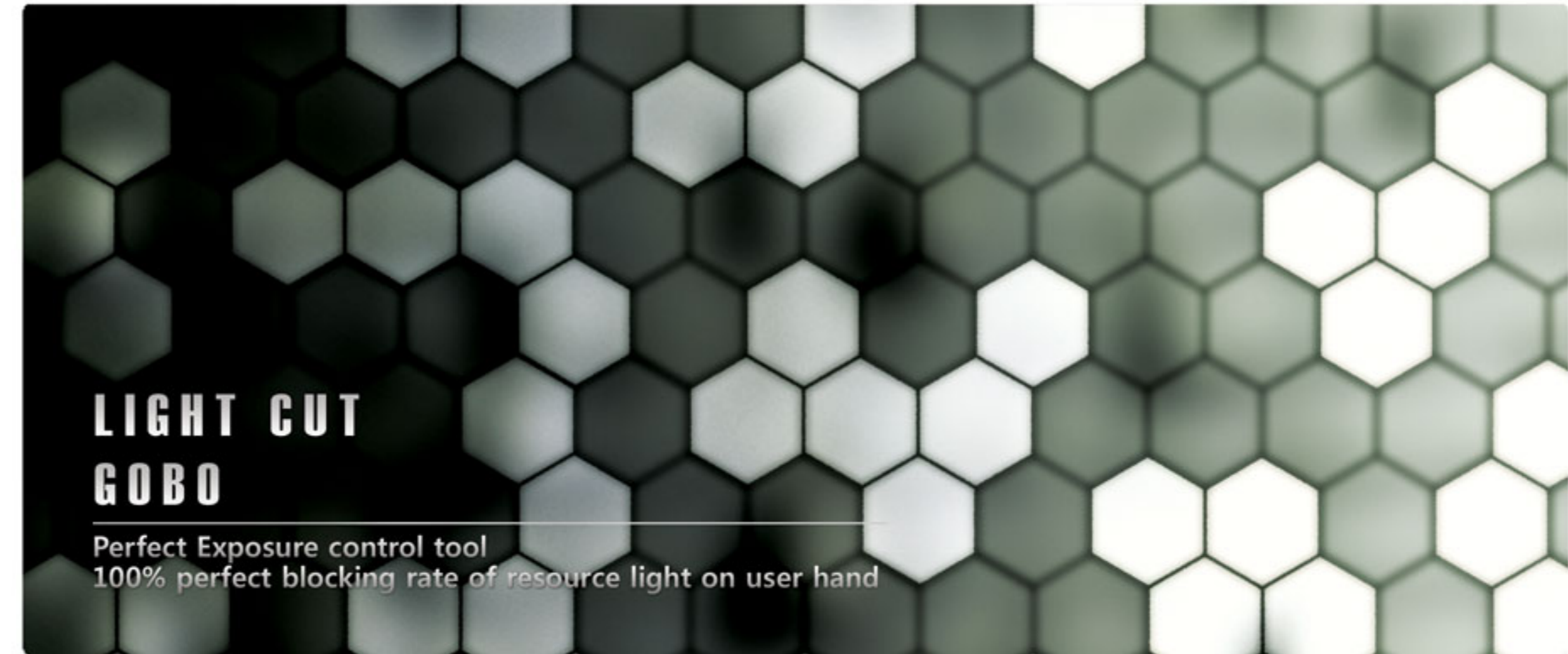
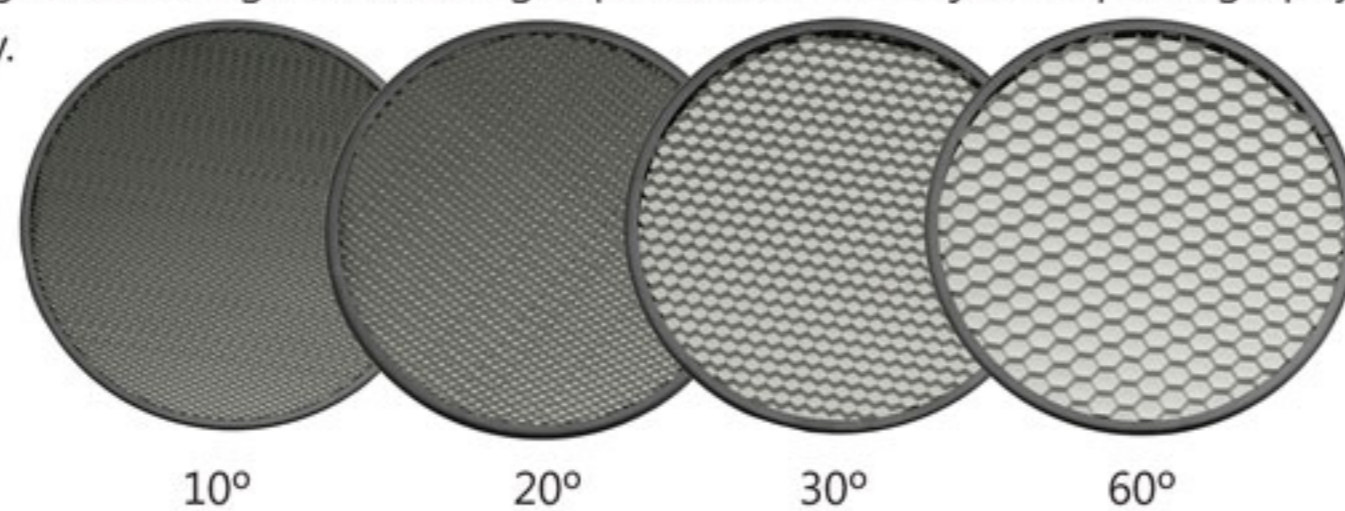
**Creation of attractive light**



RIME LITE color filter, intentionally changing colors in photographing, can create fresh images and consists of 7 colors in a set. It can be mounted on RIME LITE barn door, and be used individually. It can be easily changed to other filters through the color filter stand in front of the barn door.

**Detail-up through focusing light power in the middle**

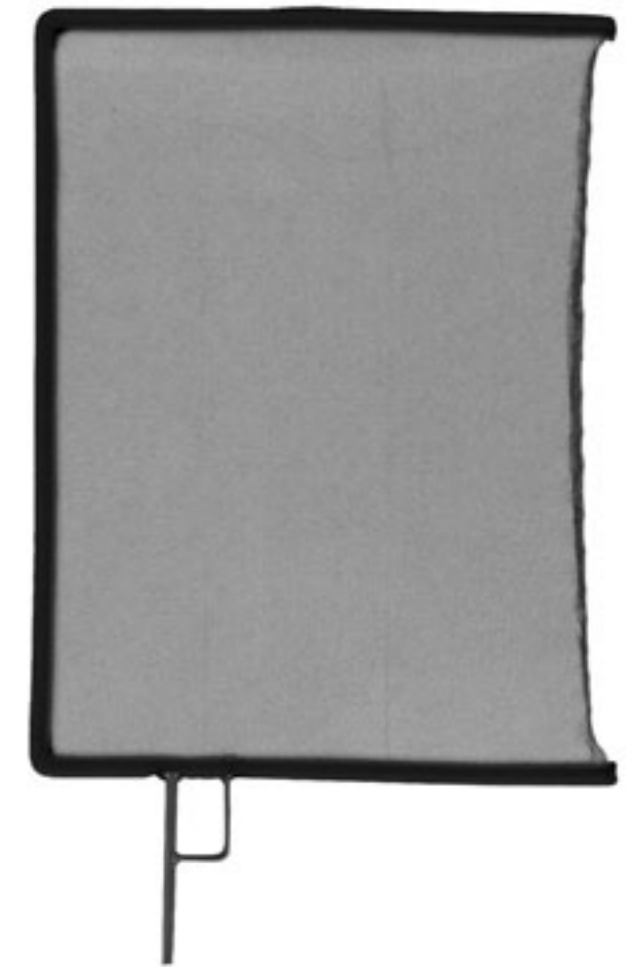
Honeycomb grid making effects by using the straightness of light focuses light power on the subject of photography, and dark shadow are formed around the boundary. It is used for profiles, fashion and advertisements, allowing more extensive ranges of application



**Perfect Exposure Control**

RIME LITE GOBO can control that the resource light can be transmitted softly, and can block to draft the light on a area of not user intention.

This tool can prevent to glossy the skin of subject on photographing of the portrait. In additional, it can provide softer light on a property photographing which has an irregular reflection of light



**100% perfect blocking rate of resource light on user hand**

This tool can block a light to be drafted on the special area which the user has instructed. For this effect, we design to apply different style's both the front panel fabric and the rear panel fabric. The both fabric can block the transmitted light anytime, anyplace on where the user doesn't want to draft the resource light on the special area





## MINI SOFTBOX

RIME LITE's Mini Softbox for Speed Light

Robert Tober / [www.toro.cc](http://www.toro.cc)  
 Steve from „Vienna Streetrockaz“  
 1x Flashhead, Octagon Softbox

### Mini Softbox

The Mini soft box is the ideal accessory for your Speed Light when photographing outdoors. When extra light is needed to balance strong backlighting using the Mini SoftBox with your Speed Light produces excellent quality soft fill light ideal for fashion and portrait use.

Can remove the overspill from strong backlight and make the source of light soft. And it has two filters the inner and the outer which are made of the diffuser fabric as per formal Soft box.

Combined on the head of the Speed Light 'Mini Softbox' can spread a soft source of light, can provide very soft fill better than the Bounce which is built in the Speed Light.



Midibox

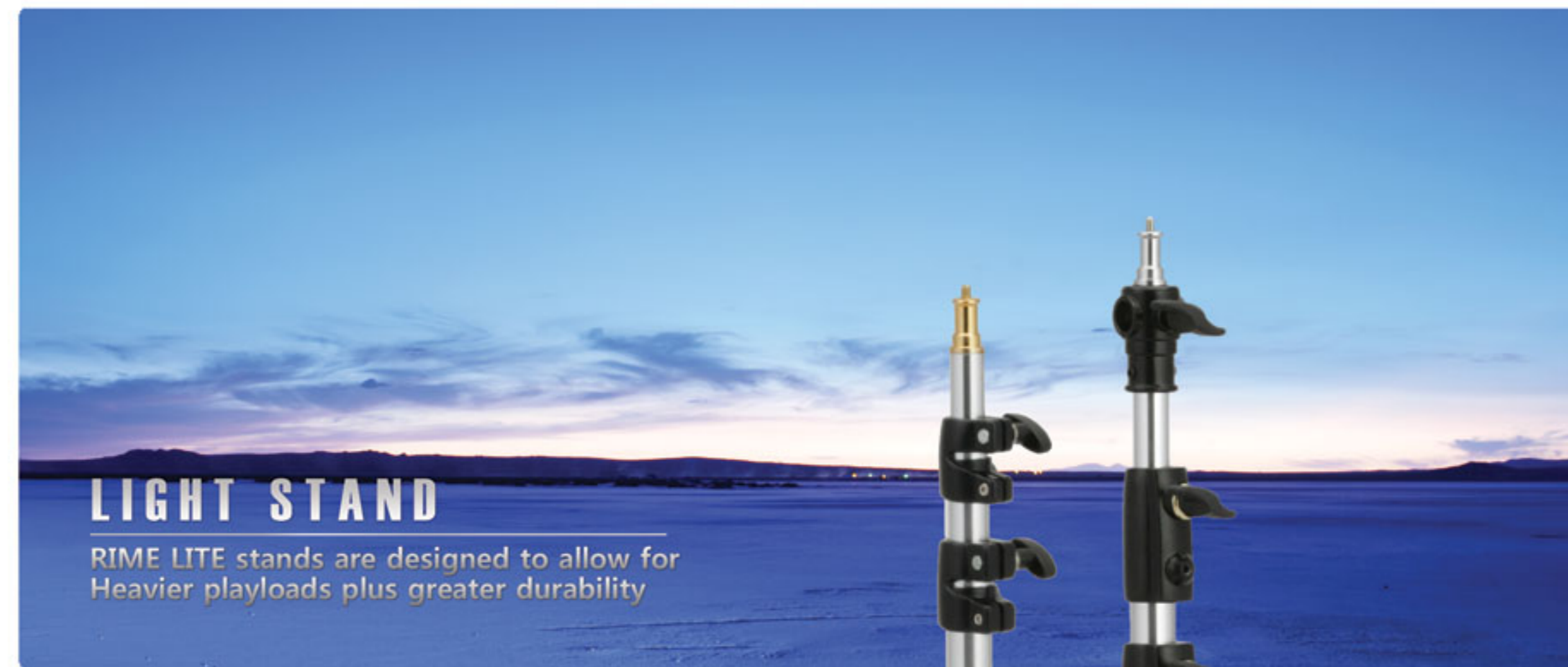


Snootbox



Rectabox

## LIGHT STAND



## LIGHT STAND

RIME LITE stands are designed to allow for Heavier payloads plus greater durability

### The ultimate stability and maximum safety

All of the RIME LITE stands are designed to allow for heavier payloads plus greater durability. Also these stands have high quality locking clasps for the ultimate stability and maximum safety.

These are available to move up and down very easy by grip clasp control.

They can be folded up quickly to a compact size, fitting into most lighting kits.



Light Stand (3 Section)  
 Size 0.72~2.5m



Light Stand (4 Section)  
 Size 1~3.6m



Back Light Stand (1 Section)



**UNION KIT-A**

- UNION STROBE x 2
- Softbox 75cm X 100cm x2
- Strobe bag x 1
- Stand bag x 1
- Radio Trigger x 1 (Swing-1)



**UNION KIT-B**

- UNION STROBE x 2
- Umbrella x 2
- Strobe bag x 1
- Stand bag x 1
- Radio Trigger x 1 (Swing-1)



**STORM KIT-A**

- STORM STROBE x 2
- Softbox 60cm X 85m x2
- Strobe bag x 1
- Stand bag x 1
- Radio Trigger x 1 (Swing-1)



**STORM KIT-B**

- STORM STROBE x 2
- Umbrella x 2
- Strobe bag x 1
- Stand bag x 1
- Radio Trigger x 1 (Swing-1)



**XB PRIME KIT-A**

- XB PRIME STROBE x 2
- XB Remote Controller x1
- Receiver x 1
- Transmitter x 1
- USB Module x 1
- Softbox 75cm X 100 cm x 2
- Light Stand x 2
- Strobe Bag x 1
- Stand Bag x 1



**XB PRIME KIT-B**

- XB PRIME STROBE x 2
- XB Remote Controller x1
- Receiver x 1 (Swing-1)
- Transmitter x 1 (Swing-1)
- Softbox 75cm X 100 cm x 2
- Light Stand x 2
- Strobe Bag x 1
- Stand Bag x 1



**FAME KIT-A**

- FAME STROBE x 2
- Softbox 60cm X 85m x2
- Strobe bag x 1
- Stand bag x 1
- Radio Trigger x 1 (Swing-1)



**FAME KIT-B**

- FAME STROBE x 2
- Umbrella x 2
- Strobe bag x 1
- Stand bag x 1
- Radio Trigger x 1 (Swing-1)



**MIRA KIT-A**

- MIRA STROBE x 2
- Softbox 75cm X 100cm x2
- Strobe bag x 1
- Stand bag x 1
- Radio Trigger x 1 (Swing-1)



**MIRA KIT-B**

- MIRA STROBE x 2
- Softbox 75cm X 100cm x1
- Umbrella x 1
- Strobe bag x 1
- Stand bag x 1
- Radio Trigger x 1 (Swing-1)



**HMI-L KIT**

- HMI-L x 2
- Softbox 60cm X 85m x2
- Strobe bag x 1
- Stand bag x 1
- Wide Reflector x 2
- Diffuser x 2
- Beauty Dish x 2



**HL1K KIT**

- HL1K x 2
- Umbrella x 2
- Strobe bag x 1
- Stand bag x 1
- Standard Reflector x 2



| STROBE



XB PRIME  
300 / 500 / 700 / 1200  
- P4



MIRA  
400 / 600 / 800 / 1000  
- P6



UNION  
200 / 400 / 600  
- P7



STORM  
200 / 400  
- P8



FAME  
200 / 400 / 600  
- P9



HMI-L  
150  
- P10



HL1K  
1000  
- P11

| POWERPACK



QUADPLEX  
1200w/s x 4  
- P14

| MOBILE BATTERY PACK



POWER ACTION 6  
600  
- P12



DUO (AC/DC)  
600  
- P16

| ACCESSORIES



WIRELESS RECEIVER  
XB PRIME  
- P5



WIRELESS TRANSMITTER  
XB PRIME  
- P5



REMOTE CONTROLLER  
XB PRIME  
- P5



USB UNIT  
XB PRIME  
- P5



TRANSMITTER  
XB PRIME / MIRA / UNION / STORM / FAME  
- P16



RECEIVER  
XB PRIME / MIRA / UNION / STORM / FAME  
- P17



BARN DOOR  
- STANDARD REFLECTOR  
- P32



STANDARD REFLECTOR  
- BARNDOOR / HONEYCOMB GRID  
- P26



STANDARD REFLECTOR(H)  
- BARNDOOR / HONEYCOMB GRID  
- P26



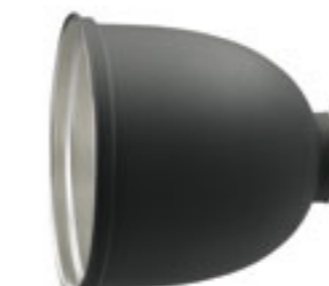
MEDIUM REFLECTOR  
- BARNDOOR / HONEYCOMB GRID  
- P26



SNOOT REFLECTOR



BACK REFLECTOR



NARROW REFLECTOR



BEAM REFLECTOR  
- HONEYCOMB GRID



WIDE REFLECTOR



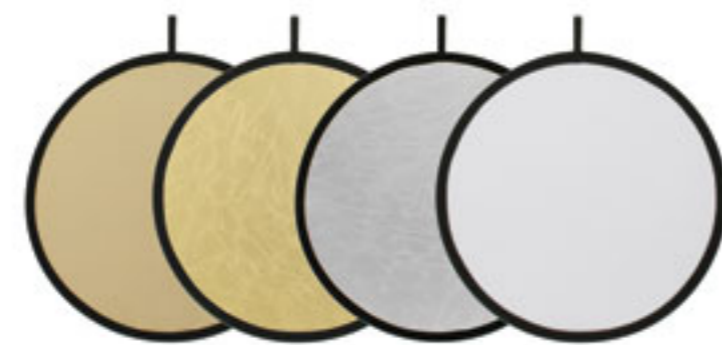
LIGHT STAND  
- P35



SPEEDRING ADAPTER  
- P24



HONEYCOMB GRID  
- 10° / 20° / 30° / 60°  
- P32



LITE DISC  
- Metal Silver, Silver White, Gold, Soft Gold  
- 80 / 100 / 120 cm  
- P31



COLOR FILTER  
- P32



LITE PANEL  
- Metal Silver, Silver, White, Gold, Soft Gold  
- 80x120, 100x180, 100x220cm  
- P29



CARRYING BAG  
- P28



MINI SOFTBOX  
- P34



GRAND SOFTBOX  
- 90 / 120 / 180 / 200 / 230  
- P22



RECTANGULAR SOFTBOX  
- P20



SQUARE SOFTBOX



OCTAGON SOFTBOX



STRIP SOFTBOX



LIGHTING BALLON  
- P23



LIGHT CUT  
- P33



GOBO  
- P33



UMBRELLA  
- Silver, Black, White(Translucent)